

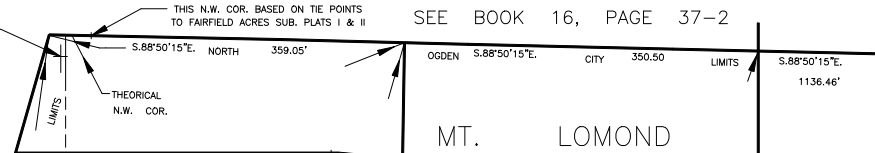
PART OF N.E. 1/4 OF SECTION 29, T.7N., R.1W., S.L.B.&M.

IN NORTH OGDEN CITY & NORTH OGDEN DISTRICT

SCALE 1" = 100'

TAXING UNIT: 03, 10

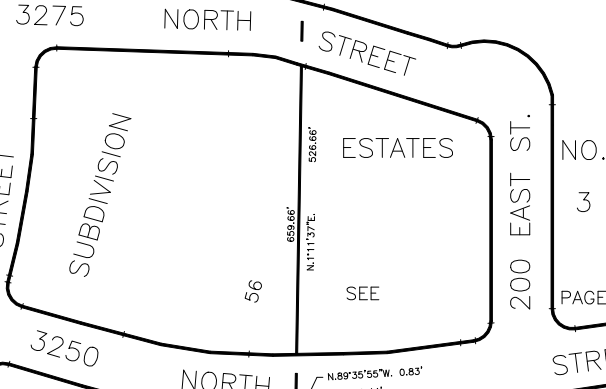
NOTE: THIS N.W. COR. BASED ON TIE POINTS TO HILLTOP SUB. 8 DEBLOUIS SUB.



SEE BOOK 16, PAGE 37-2

OGDEN CITY 350.50 LIMITS S.88°50'15\"/>

MT. LOMOND



SEE PAGE 43

NO. 2

ESTATES

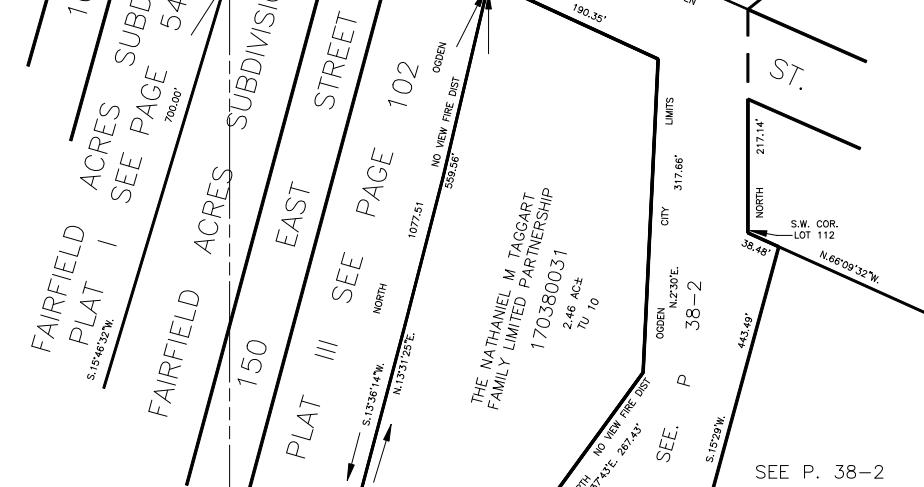
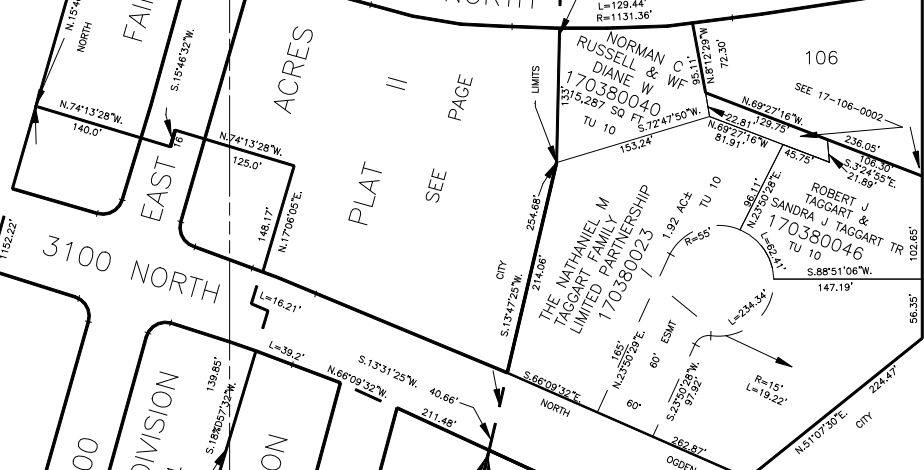
NO. 106

MT. LOMOND

SEE PAGE 44

10' UTILITY & DRAINAGE EASEMENTS EACH SIDE OF PROPERTY LINES AS INDICATED BY DASHED LINES EXCEPT AS OTHERWISE SHOWN.

FOR COMPLETE ENG DATA SEE ORIGINAL DEDICATION PLAT IN BOOK 16, PAGE 37-2 OF RECORDS.



SEE P. 38-2